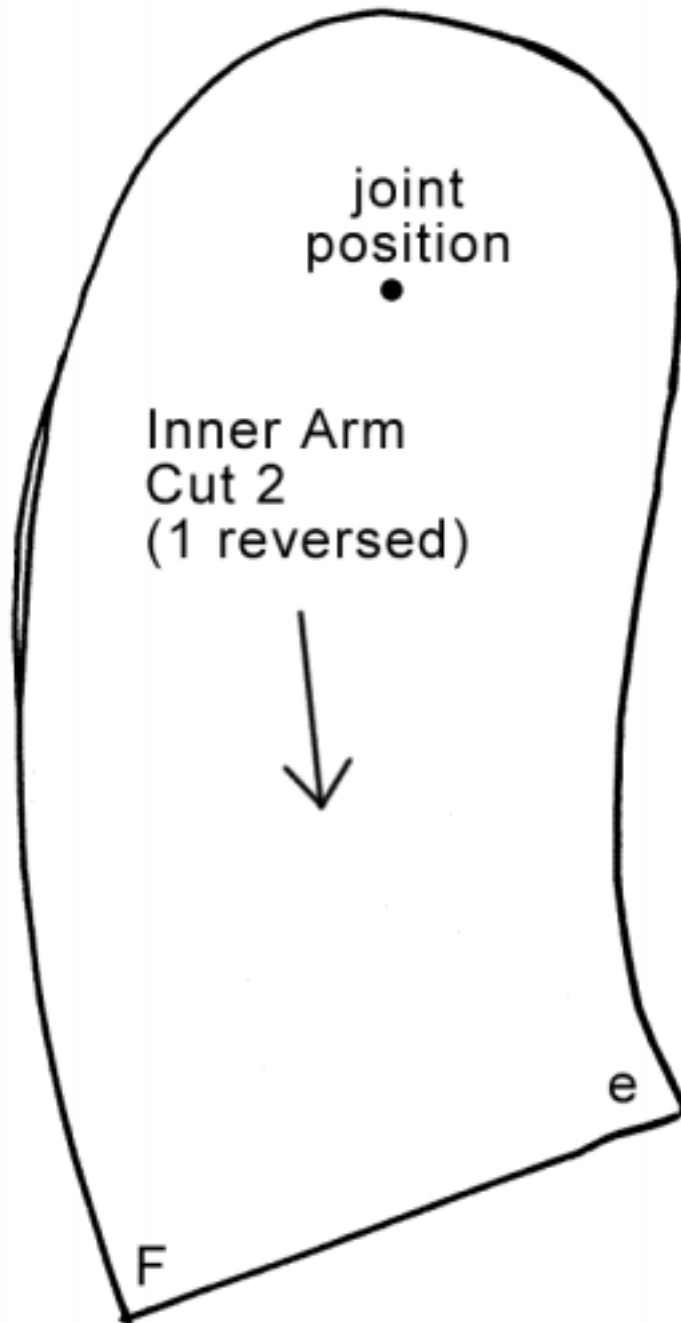
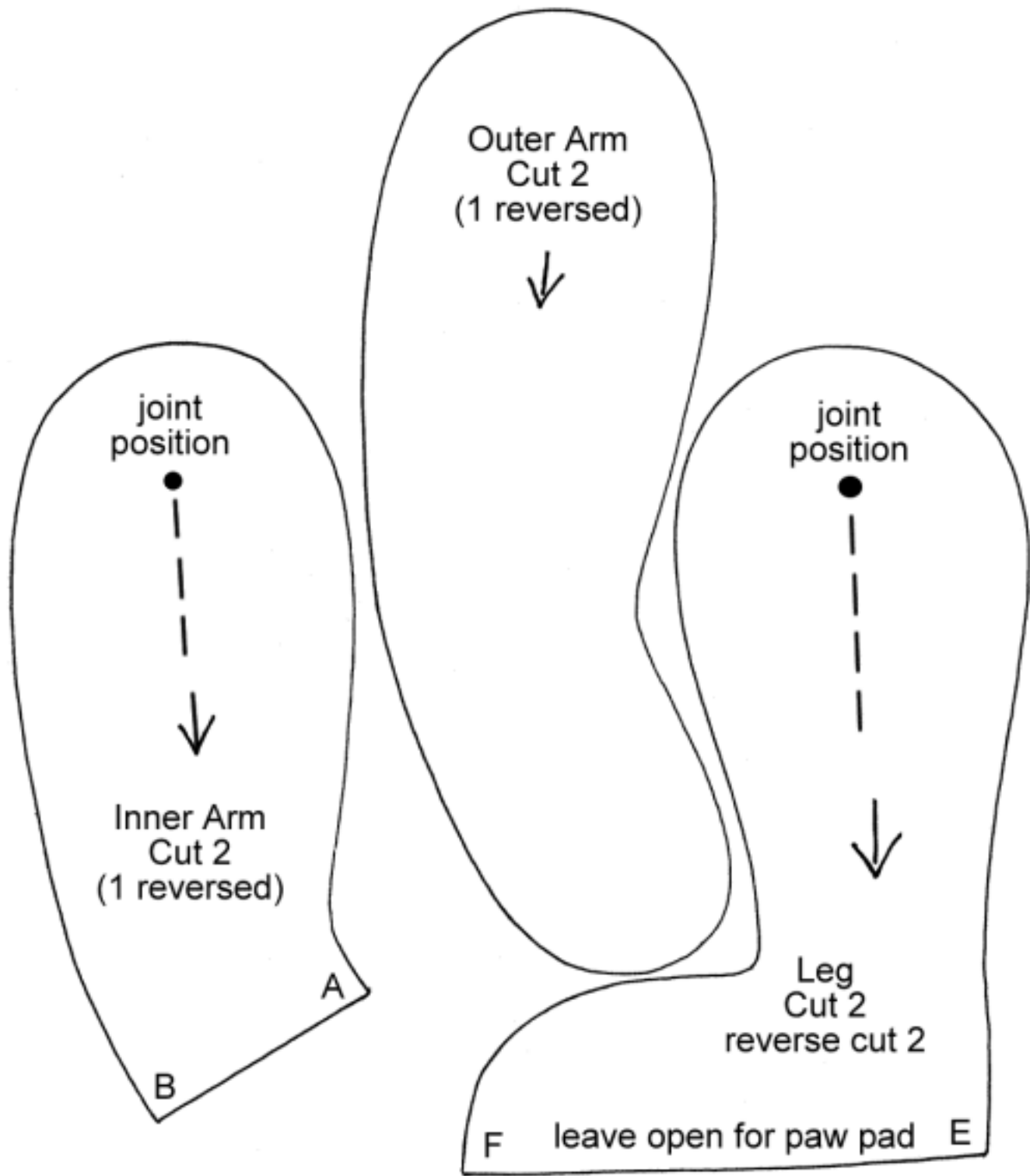


Floyd and Lloyd by Fiona Sword of Balgray Bears

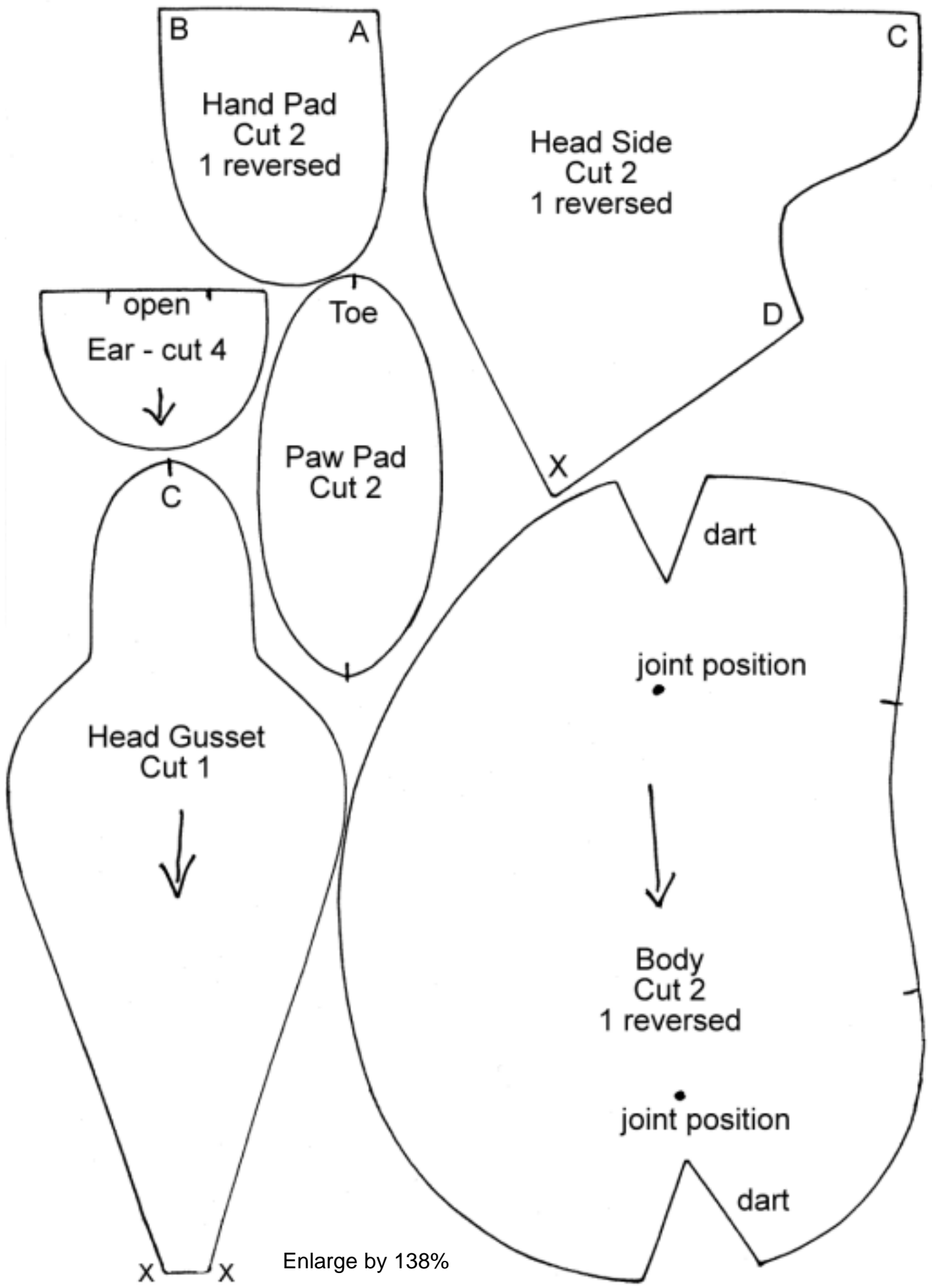
Fiona Sword of Balgray Bears has designed us two superb teddies for this month's update. Although they're sewn from the same pattern, they look entirely different. One is a traditional mohair bear, with a cuddly appearance while the other looks older than his years, being cleverly aged. We hope you



reduce by 93%



Enlarge by 125%



Enlarge by 138%

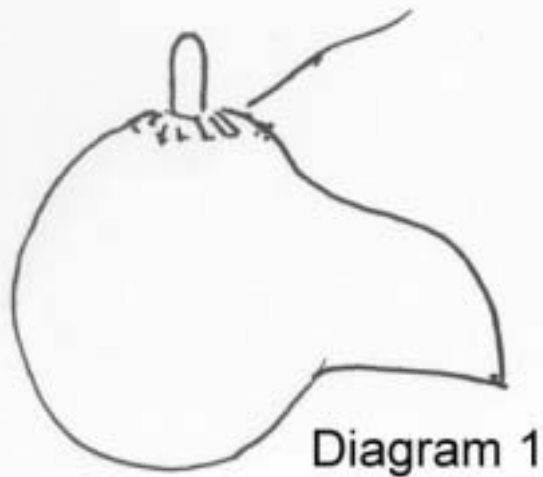


Diagram 1

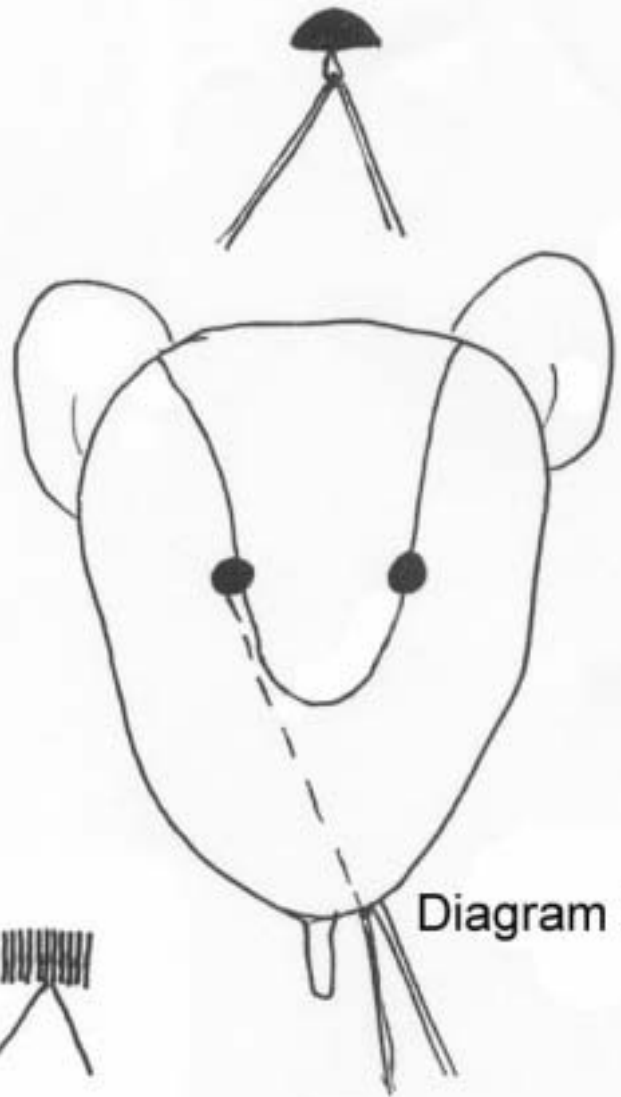
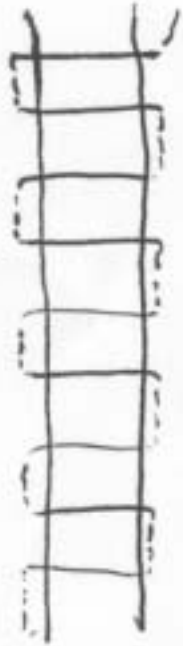


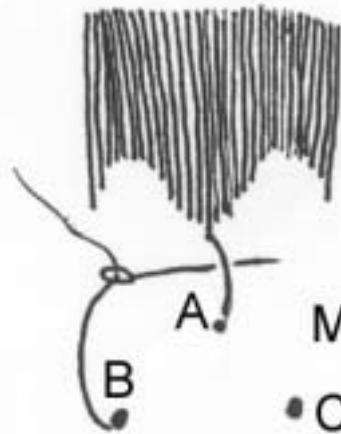
Diagram 2



Ladder stitch diagram 3



Noses & Mouths



Mouth